



Service Offset Supplies

Large Format

CATALOGUE



... a partner and trusted supplier

www.serviceoffsetsupplies.co.uk



The large format sector is one of the global growth areas of the print industry. SOS provides everything you need to make a success in this market.

Firstly, you'll need the right kit. SOS supply market-leading equipment covering everything from table-top machines, roll and sheetfed proofers, all the way up to the biggest flatbed and hybrids, with plenty of ancillary equipment such as cutters and laminators to run alongside.

We supply some of the sector's biggest and most well known manufacturers such as Epson and Roland, and we've also hand picked equipment from some of the industry's most exciting relative newcomers. Whatever the application or budget, we can meet the requirement.

But that's not all...with SOS you get much more than just great equipment!

WE ARE THE COLOUR EXPERTS

As fully accredited Fogra print experts we offer a total calibration service, ensuring colour consistency from every device - and our software and workflow solutions can link your print operation together. We can even optimise your ink usage to save money and reduce waste.

SERVICE - IT'S IN OUR NAME!

When you buy from SOS you get the support you need for the full working life of your purchase, from sale to installation and onwards. We believe in the value of long-term working relationships with our customers - we won't let you down.

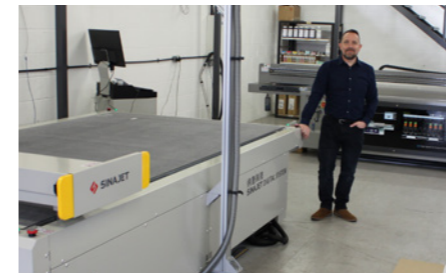
Contents

- Roland Wide Format 04-07
- Epson Wide format. 08-10
- Roland Small Format Flatbeds 11
- Gibson/Focus Flatbed 12
- Gibson hybrid Roll/Flatbed 13
- Xenons hybrid Roll/Flatbed 14
- Roland Flatbed 15
- Vivid cutters/laminators 16
- Wide format Cutters 17-19
- Wide Format Media 20-21
- Rips and Software 22-24
- Workflow 25-26
- Wide format film 27



“Good support is important especially if you're going for a new market, and SOS made us confident...our Gibson flatbed is now producing as many as 200 boards a day”

Alison Blyth, PDQ, Leeds



“Buying a machine isn't just about the machine; it's about servicing, it's about support, it's about reliability, the full package. With SOS we know we are in safe hands.”

Justin Earl, Chroma

Roland Wide Format

TrueVIS VG3/SG3

THE FUTURE OF PRINT & CUT

TrueVIS VG3 and SG3 printers deliver the power and performance to satisfy the needs of the most demanding print professionals. Both machines feature the award-winning TR2 ink - the SG3 has a CMYK set, while the VG3 has eight colours to increase the breadth of colour gamut and add real impact and high visibility to graphics.

THE MOST ADVANCED GENERATION OF TRUEVIS

FlexFire print heads, TR2 inks, and True Rich Colour combined with user-friendly features make the VG3 and SG3 the ultimate in professional print graphics production. A redesigned chassis, high-quality components, and a variety of media handling improvements make these machines perfect for unattended printing of short runs, long runs, print/cut, and so much more.

ENHANCED FEATURES

These machines are easy-to-operate via an intuitive 7" LCD touch screen control panel. Automated media calibration saves time and material. A newly designed, adjustable media take-up unit accommodates rolls of different sizes. They employ a one-touch media clasp which makes loading reels easy for a single operator.

For enhanced colour performance, the VG3 has several available ink configurations to meet your customers' needs—from brand accurate colours and high-end graphics to high-productivity jobs. Combine Orange and Green inks to push the colour boundaries of digital printing. New CMYK plus light cyan, light magenta, orange, and green inks—combined with True Rich Color 3 deliver vivid, smooth, and colour-rich graphics.



- Included VersaWorks 6 RIP—featuring new True Rich Color 3 preset, Nearest Colour Finder, and Variation Job function.
- Roland DG Connect App ready—giving you instant access to important data about print jobs as well as your business.
- A variety of available ink configurations expand your gamut to output rich colour, smooth gradations, and beautiful skin tones.
- Perforated sheet cut option reduces post-processing with “easy tear” perforations between print jobs

Roland Wide Format

TrueVIS LG

THE FUTURE OF PRINT & CUT

The Roland TrueVIS LG is an advanced UV-LED integrated print/cut machine available in 30-inch (LG-300) 54-inch (LG-540) and 64-inch (LG-640) formats.

THE MOST ADVANCED GENERATION OF TRUEVIS

Staggered print heads, ECO-UV inks, and True Rich Colour combined with user-friendly features make the LG the ultimate in professional UV print and cut. A redesigned chassis, high-quality components, and a variety of media handling improvements make the LG perfect for unattended printing of short runs, long runs, print/cut, and so much more.

ENHANCED FEATURES

These machines are easy-to-operate via an intuitive 7" LCD touch-screen control panel. Automated media calibration saves time and material. A newly designed, adjustable media take-up unit accommodates rolls of different sizes. They employ a one-touch media clasp which makes loading reels easy for a single operator.

Available ink configurations to meet your customers' needs—from brand accurate colours to high-end, premium gloss and texture effects. Combine Orange and Red inks to push the colour boundaries of digital printing. High-opacity white ink specially formulated to quickly produce high-quality window graphics with economical ink usage.



- Included VersaWorks 6 RIP—featuring new True Rich Color 3 preset, Nearest Colour Finder, and Variation Job function.
- Roland DG Connect App ready—giving you instant access to important data about print jobs as well as your business.
- A variety of available ink configurations expand your gamut to output rich colour, smooth gradations, and beautiful skin tones.
- Perforated sheet cut option reduces post-processing with “easy tear” perforations between print jobs

Roland Wide Format

TrueVIS MG

THE FUTURE OF PRINT & CUT

The Roland TrueVIS MG is an advanced UV-LED integrated print/cut machine available in 30-inch (MG-300) and 64-inch (MG-640) formats.

THE MOST ADVANCED GENERATION OF TRUEVIS

ECO-UV inks and premium UV print technology make the MG ideal for branching into professional UV print and cut. High-quality components, time-saving RIP features and simple media handling make the MG perfect for printing short runs, long runs, print/cut, and so much more

ENHANCED FEATURES

Easy-to-operate control panel. An Optional tension bar accessory enables printing onto thin films. Optional extension table lets users print onto semi-rigid card stock. Optional take-up unit enables unattended printing.

Available ink configurations to meet your customers' needs—from brand accurate colours to high-end, premium gloss and texture effects. Combine Orange and Red inks to push the colour boundaries of digital printing. High-opacity white ink formulated to produce high-quality window graphics with economical ink usage.



 Roland®

- Included VersaWorks 6 RIP—featuring new True Rich Colour 3 preset, Nearest Colour Finder, and Variation Job function.
- Roland DG Connect App ready—giving you instant access to important data about print jobs as well as your business.
- A variety of available ink configurations expand your gamut to output rich colour, smooth gradations, and beautiful skin tones.
- Perforated sheet cut option reduces post-processing with “easy tear” perforations between print jobs

Roland Wide Format

TrueVIS AP-640

The Roland TrueVIS AP-640 is a brand new 64-inch printer utilising environment friendly resin based inks.

THE BENEFITS OF RESIN WITH TRUEVIS QUALITY

Piezo printheads are arranged in a dual, staggered formation with an optimizer printhead and dedicated CMYK printhead for a finer dot, resulting in more precise colour and image results. The TrueVIS AP-640 redefines resin printing with high-colour saturation on a wide range coated and uncoated media included non-PVC, vinyl, paper, film and more. GREENGUARD Gold Certified TrueVIS Resin Ink meets the most rigorous standards for low VOC emissions into indoor air.

ENHANCED FEATURES

A 7-inch, full-colour touch panel offers easy print options with intuitive settings and functions. Water-based TrueVIS Resin Ink provides quick-drying, scratch-resistant, safe results on a wide range of media. The machine uses new 700 ml high-capacity ink pouches. A high-productivity dryer Unit allows prints to dry quickly and completely before proceeding to the next process.

Equipped with print heads that offer variable dot printing for more precise colour and image results. TrueVIS Resin Ink offers heavier colour saturation on PVC-free media than conventional resin ink and resin printers. Newly developed water-based resin ink and innovative True Rich Colour 3 preset work together to provide vibrant colour and natural-looking print quality.



 Roland®

- VersaWorks 6 RIP Software is included with the new AP-640 to effortlessly manage your print output.
- Media gap and feed compensation can now be adjusted automatically with a single button. The AP uses optical registration technology to ensure print accuracy and avoid variations in output.
- Roland DG Connect App included—gain a detailed understanding of your entire print operation while keeping your device running at optimum performance.
- Included adjustable take-up unit maximizes stability when printing, while also allowing for clean, efficient media collection from roll to roll.

EPSON Wide Format

SureColor SC-P6000/P8000

PHOTO PRINTER AND PROOFER

Consistently produce high-quality, accurate and long-lasting professional photographs, fine art prints and proofs on a variety of media.

93% of Pantone® / Superior lightfastness

Produce professional prints and proofs of the highest quality with this versatile photo printer and proofer. Able to produce 93% of Pantone-certified¹ colours for accurate reproduction, the SC-P6000 STD/ SC-P8000 STD come with an eight-colour ink-set and an Epson TFP PrecisionCore print head to create accurate and long lasting results. This advanced engineering is coupled with a range of easy-to-use features.

Wide colour gamut

Featuring an UltraChrome HD eight-colour pigment ink-set, the SC-P6000 STD Spectro delivers 93% of Pantone®-certified¹ colours to create superior-quality, highly-accurate results with bright, vivid colours. For stunning prints, an Advanced Black and White Mode helps produce high density, deep, rich blacks and ultra-smooth tones.

Reliable and efficient

Utilising an Epson TFP PrecisionCore printhead and automated nozzle-check function, users can be sure they will deliver consistent results and the highest quality output. Consistent colour reproduction is guaranteed, time after time and without the need for expensive add ons, thanks to an Epson Colour Calibration utility and Spectroproofer powered by X-Rite for fast, accurate colour measurement.

Easy to use and cost-effective

Every aspect of the printer has been designed to maximise ease of use and reliability. Media changing is fast and simple with a clear LCD control panel and menu, while a choice of 350ml and 700ml individual cartridges enables longer print runs between cartridge replacements.

Long-lasting results

Thanks to a superior lightfastness, prints will continue to look their best long after they are created. In fact, prints on Premium Glossy Photo Paper can last a minimum of 60 years².

- **UltraChrome HD pigment inks** Delivers highly-accurate colours with 93% of Pantone®¹
- **Epson TFP PrecisionCore printhead** Ensure consistent results and high-quality, reliable output
- **Superior lightfastness** Prints on Premium Glossy Photo Paper can last up to 60 years²
- **High-capacity ink cartridges** Longer print runs between cartridge replacements
- **Easy to use** Clear LCD control panel and optional 320Gb hard disk



EPSON Wide Format

SureColor SC-P7500 & P9500

PHOTO PRINTER AND PROOFER

Up to four times faster than previous models!

The SureColor SC-P7500 and SC-P9500 large format printers deliver the widest colour gamut for artists and photographers, the most reliable reproduction for professional proofing – and now offer the fastest throughput for high-volume production, producing at up to four times the speed of previous models. Both the 24" SC-P7500 and the 44" SC-P9500 offer identical, class-leading features and performance, at a size to suit your requirements.

Vivid colour

Epson's first ever 12-colour printer, accompanied by the newly-developed ink set (UltraChrome Pro12 with K3 technology), which includes orange, green and violet, gives you ultimate colour accuracy thanks to the widest colour gamut on the market. The Epson-designed, advanced print heads use up to 800 nozzles for each colour, to produce perfectly accurate dot placement and eliminates misting and satellites. With every detail captured, your images benefit from smooth gradations and accurate texture reproduction.

Deeper blacks

Epson innovations provide the best perceptual black density with black enhancement overcoating technology. The result? Your creative work is more striking and dramatic than ever before.

Ease-of-use

The new intuitive, user-friendly interface removes the guesswork so you can focus on what you do best. And now, utilise the Epson Media Installer tool for quick and painless media registration.

The 4.3" LCD touch-screen panel has a range of configuration options, including a large print status view that makes the print job status easy to see from a distance, and an illuminated paper path to watch printing in progress. Printouts fall onto a new protection cloth, with the printed side of the media face-up, so you don't need to worry about scratching.

- **UltraChrome HD pigment inks** Delivers highly-accurate colours with 93% of Pantone®¹
- **Epson TFP PrecisionCore printhead** Ensure consistent results and high-quality, reliable output
- **Superior lightfastness** Prints on Premium Glossy Photo Paper can last up to 60 years²
- **High-capacity ink cartridges** Longer print runs between cartridge replacements
- **Easy to use** Clear LCD control panel and optional 320Gb hard disk



EPSON Wide Format

SureColor SC-P20000

PHOTO PRINTER AND PROOFER

Combine the highest printing speed and superior quality in 600 x 600dpi and higher with these precise, accurate printers

High productivity without compromising on quality

Allowing users to benefit from high productivity without compromising on quality, the printer comes with a PrecisionCore MicroTFP printhead for producing outstanding results, even in lower-quality modes. Coupled with a high-precision media feed technology, including a newly developed camera-based paper feed stabiliser and media inductive roller system, the printer helps ensure smooth operation.

Accurate, precise and reliable results

A new Epson UltraChrome Pro 10-colour ink-set consistently delivers fantastic-looking prints. Blacks will be deep and rich thanks to new high-density Photo and Matte Black inks. Better gradation with reduced graininess is achieved thanks to K4 and Multi Size Droplet Technology (MSDT). To ensure consistency without the need for expensive add-ons, Epson Colour Calibration utility means users can easily manage their colour reproduction.

Easy to operate and maintain

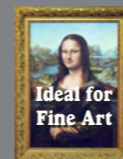
Getting started is easy with a clearly illustrated user guide and colour LCD Panel. When it comes to handling, changing and switching media the process is quick and effortless. During printing, a transparent printer cover window and roll cover window allow users to check the print status and remaining media. After printing has finished, the position of the printhead means it can be cleaned by the user, along with the ink cap, to help save on maintenance costs

Long-lasting results

Thanks to a superior lightfastness, prints will continue to look their best long after they are created. In fact, prints on Premium Glossy Photo Paper can last a minimum of 60 years².



- **PrecisionCore MicroTFP printhead** Achieve high productivity and exceptional print quality
- **UltraChrome Pro 10-colour ink-set** For excellent black and white and colour reproduction
- **High-precision media feed technology** Featuring camera-based paper feed stabiliser
- **Clear and easy operation** Enjoy hassle-free printing and maintenance



Roland small format flatbeds

VersaUV LEF2 200/300



Simple to operate and packed with potential, the LEF2 series enables direct printing onto a huge range of materials and objects up to 100mm thick – producing stunning colour, realistic textures and stylish embossed effects.

- Award-winning benchtop UV printers
- Print directly up to 100mm thick, Length 330mm, width 508mm (LEF 2-200) or 770mm (LEF 3-200)
- Ideal for personalisation of small objects
- ECO-UV ink in CMYK plus Gloss and White (primer)



New VersaUV LEF2-300D

The latest addition to the LEF range



Enables direct printing onto a huge range of materials and objects up to **200mm thick**

- Latest generation award-winning benchtop UV printers
- Print directly up to 200mm thick, 770mm width and x330mm length for printing on taller objects.
- VersaWorks 6 RIP software
- ECO-UV ink in CMYK plus Gloss and White (primer)



Gibson/Focus Flatbed



Gibson GT-F2512/3020

LED-UV digital flatbed printer in sizes 2540 x 1220mm and 3100 x 2000mm. Prints on media up to 100mm thick.

- Ricoh Gen6 print heads
- Linear drive system
- LED curing
- 5 layer printing support
- 2-12 print heads
- Multi zone vacuum system

GIBSON

Gibson Hybrid Roll/flatbed



Gibson GT-H1800/3200 Hybrid

LED-UV digital hybrid printer with 1800mm or 3200mm print size. Prints on media up to 50mm thick.

- Ricoh Gen6 print heads
- Print multi layer in a single pass
- Enhanced vacuum system
- Linear drive system
- LED curing
- 2-12 print heads
- Multi zone vacuum system

Gibson is a relatively new brand in the UK, but has a rapidly growing user base thanks to a winning combination of high performance and low investment cost. Gibson produces a range of flatbed and hybrid LED-UV printers designed to meet the most exacting standards

Focus Atlas 1311 Plus flatbed

FOCUS INC.



Print on materials up to 32cm thick including PVC, plastics, leather, fabric, canvas, metal, ceramics, glass and wood.

- 1300 x 1100mm maximum print size
- 20mm varnish/emboss
- Single-pass white and colour ink
- Cartridge heating and temperature control
- UV water cooling system

Benefits of UV Printing

- UV Inks print directly onto a variety of substrates including (Glass, Ceramic, Wood, Metal, Paper, Leather, Wallpaper, Plastics)
- UV Inks are long lasting and scratch resistant on most materials so often don't require laminating.
- UV Inks are suitable for indoor and outdoor applications.
- UV Inks are more suitable than other digital printing processes for lower grade substrates.
- UV Inks offer White & Varnish Inks for embellishing print products.
- UV Inks are cured instantly using UV light so they are able to be cut & finished directly after printing.
- UV Inks are 99% VOC free

Xenons Hybrid Roll/flatbed

Xenons XJ1800/XJ2000 Hybrid

The XJ1800 (1.88m) and XJ2000 (2m) UV Flatbed Roll to Roll Hybrid printers deliver fast and versatile UV performance.

These hybrid printers from Xenons are engineered for high-endurance work and low running costs to deliver high-quality print for a long period of time.

Can print on substrates like ACP, foam, board, flute board, glass, ceramic tiles, wood, and on a wide range of vinyl and flexible media.



XENONS

Xenons is a major international digital inkjet printing brand. Manufactured in China, it has hundreds of successful installations throughout Europe and the USA (sold in the USA under the Yillijet brand). There have been over 35 UK Xenons installations.

- Ricoh/ Epson print heads
- LED curing
- 1800mm max printing width
- 2,400dpi resolution
- Easy-to-use RIP
- Maximum media thickness of 50mm.
- Ink supply system with level alarm function.
- Automatic carriage height adjustment
- Automatic correction and flattening system - avoid any shifting during printing.
- Media registration system for both roll and rigid media.
- Anti-crash system
- Ionization bar

Roland Flatbed

EU-1000MF



The EU-1000MF is a new 1.2 x 2.4m UV LED flatbed printer

- 4 to 6 colour Max printing area of 2,440mm x 1,200mm
- Print up to nine 1.2 m x 2.4 m boards per hour
- Up to 95mm of height clearance
- Print onto acrylic, wood, PVC, PETG, foam, aluminium plate and more.

Roland

LARGE FORMAT FLATBED PRINTING AT THE PRICE, QUALITY AND SPEED YOU NEED

Whether you supply signage and graphics for shop fronts, events, corporate, interior decoration or any number of other applications, the VersaOBJECT EU-1000MF is a revolutionary way to print and create new business opportunities. Compatible with hundreds of substrates and delivers high-impact graphics, the EU-1000MF fits seamlessly into your workspace and offers the ease, speed, quality and value you need to take your business to the next level.

Print on PVC panels, foam panels, corrugated cardboard, aluminium plates and more.

Fast printing with four-colour/four-head and six-colour/six-head models.

Reliable, high-quality printing with high-density, low-cost E-US inks, a liquid-cooled LED lamp system, a four-zone vacuum bed, and many more advanced features.

INEXPENSIVE INKS, INTUITIVE OPERATION

In addition to CMYK process colours, the new E-US inks are available in White and Clear Varnish on the 6C configuration, delivering high-quality print results on hundreds of applications. The VersaOBJECT EU-1000MF offers a number of ink advantages for a high-volume production UV flatbed operation.

- Advanced Printhead Technology includes a printhead protection system that detects media impacts, as well as automatic media and printhead height positioning for easy setup and output.
- The Anti-Static Ionization System reduces static interference and increases print quality.
- Solenoid alignment pins provide accurate media placement and positive air-pressure helps users to load sheet materials.
- The Side Table for Control Station allows a comfortable and convenient management of the machine with the accessible placement of a PC or laptop.

Vivid cutters/laminators

vivid. Veloblade series

A digital die-cutter that gives you the freedom to easily create unique and intricate products at the most cost-effective price on the market.

- Available for a wide range of sheet sizes from 600 x 400mm to 3000 x 1600mm
- A huge range of applications
- Compatible with AutoCad, CorelDraw, Adobe
- Fast, efficient, accurate



vivid. easymount. PROFESSIONAL LAMINATOR

Cost effectiveness

- The versatility of Easymount laminators makes them incredibly cost effective, meaning you can now truly offer a one-stop shop for print and finishing.
- The range includes everything from entry-level models for those still finishing jobs by hand, to professional heavy-duty thermal models that will cope with every application all day everyday.



Wide Format Cutters

SINAJET DK/DG 1512/2513

- Vacuum table with exclusive absorption technology
- Low noise, low energy
- Max cut thickness 25mm
- Software control with intelligent automation features
- Safety features include anti-collision and infrared blocking option
- Max cut size 1500 x 1200mm or 2500 x 1300mm



TITANIUM

- Smart cutting head with interchangeable tools
- Powerful auto-feeder
- Sheet edge recognition
- Cutting sizes from 1100 x 1300mm to 2500 x 1600mm
- Max cut width 50mm (customisable)
- Innovative QR code scanner to retrieve job data

Wide Format Cutters

Ameida

- Infrared sensing system, 360° surround security to ensure operator safety.
- Sturdy aluminium honeycomb platform
- Efficient anti-drying and rolling feeding system, complete feeding and cutting in 5 seconds; automated continuous cutting
- Powerful CAD editing and design software
- Support for barcode reading
- Cut parameter optimisation
- Accurate tool setting system
- Easy to install and maintain



iECHO PK-0705/0705

- High frequency electronic oscillating knife
- Cuts labels of any shape, and will cut and crease cardboard box designs
- Precise auto positioning system Auto feed system
- Modular cutting tools
 - Universal Tool, Kiss Cut Tool, Crease Wheel
- Low noise, low energy
- Max cut size 750 x 500mm
- Integrated design: machine adopts an integral welding frame, the smallest model occupies 2 sqm. Wheels make it easy to move around.
- Only 220V single phase electricity required,
- Vacuum suction system is used to fix material on the table
- Automatic loading device to stack up to 120mm (400pcs card board of 250g).
- Conveyor belt automatically sends finished material to collecting area.
- High precision vision registration system (CCD): with CCD camera
- Software is easy to operate, one click to start

Wide Format Cutters

GRAPHTEC

Roll Fed Cutting Plotters

CE7000 Series



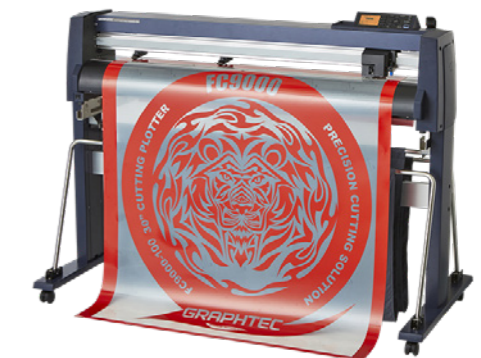
The Graphtec CE7000 Series is now available in 4 widths and 3 different model formats. The CE7000 now includes an enhanced specification which makes it one of the most cost effective cutting plotters on the market for sublimation markets, sign writing sectors and sticker & label creation.

- Available In 4 Widths
- 3 Model Formats
- Max Cutting Speed: Up To 1000mm/s
- Cutting Force: Max 450gf
- Networking Capabilities
- ARMS 8.0 Optical Eye For Print & Cut
- Continuous Cut Capabilities (Barcode Reader)
- Reliable Long-Length Tracking (Up To 5m)
- Large Graphic Type LCD Control Panel

FC9000 Series

The Graphtec FC9000 series premier cutting plotter offers best in class cutting and plotting capabilities and comes as standard with a new barcode reader for continuous cut capabilities.

- 4 Widths Available
- Maximum Cutting Speed: 1485mm/s
- Cutting Force: Max 600gf
- Networking Capabilities
- Data Link Function (Barcode Reader)
- Optional Automatic Take-Up Spool For 140 & 160 Models
- In-Built Cross-Cutter Function For Sheet Off
- Servo Driven Grit Roller Type



Wide Format Media

T4 Inkjet Wide Format media

T4Jet PROOFING INKJET MEDIA

SOS stocks a wide range of inkjet media under our own exclusive brand T4Jet, and we become one of the leading suppliers of inkjet media in the UK. A number of our medias have received proofing accreditation from Fogra.

ISO 12647 PROOFING MEDIA

T4 180 MA Suitable for Proofing to 52L
T4 200 FW Suitable for Proofing to 39L
T4 200 51 Suitable for Proofing to 52L and 39L

EFI 8175 OBA PROOFING PAPER

For Proofs on uncoated papers with optical brighteners, 8175OBA Matte has been specifically designed for uncoated proof standards. It is highly brightened and suitable for proofing of Fogra 52.

T4 Waterbased Wide Format media

SOS T4 WB ROLL UP GREYBACK 180

A matt water resistant coated polypropylene film with Greyback for greater opacity.

SIHL SYNTHETIC PP GREYBACK 180

A water-resistant coating guarantees a durable and scratch-resistant printed image, characterised by outstanding colour brilliance and saturation.

OTHER MEDIA AVAILABLE: *Canvases, Backlits, Wallpapers and more ...*

T4 Fine Art Media

SOS stock various fine art medias including :
PhotoRag
Canvas
Water colour papers



Wide Format Media

T4 Inkjet Solvent Wide Format

SOS T4S FRONTLIT FR BANNER 450g

Our Frontlit Banner has a new hybrid construction, offering a superior level of tensile strength. Fire rated to B1 certification for external and internal banner applications. Suitable for use with solvent, eco-solvent, uv-c, latex and screen inks.

SOS T4S SOL GLOSS BACKLIT FILM 220mic

Gloss coated, tear resistant polyester backlit film for solvent inks. The strengths of this backlit lie in its pleasant gloss finish, the impressive brilliance with direct and transmissive light plus its incredible resistance.

SOS T4S SOLVENT POSTER PAPER 200g

Multilayer coated, water & weather-resistant, bright white paper, specifically developed for solvent or UV curing inks. This paper is suitable for billboard applications, delivering high scratch resistance and perfect folding performance.

SOS T4S SOL ROLL UP FILM GREYBACK 250mic

Roll-Up Film Plus 205 SB Satin is suitable for the creation of high quality roll-up and display graphics

using solvent, latex and UV inks. The satin finish guarantees robust and scratch resistant prints, characterised by high colour brilliance, saturation and image sharpness. The tear resistant polypropylene/polyester composite enables problem free processing, while offering a high opacity due to the matt, silver back. The attractive price-performance ratio makes the product especially suitable for high volume projects used short to mid-term. An increase in general productivity is possible thanks to the good printing results achieved with fast print mode (HP Latex up to 6 pass).

SOS SOLVENT MONO VINYLs

Our solvent Mono vinyl's are high quality, with long durability. They are available in Gloss, Matt & Clear with Grey or White backing, with either permanent or removable adhesive.

Other media available include:
Canvases, Backlits, Wallpapers and more ...

SOS Roll Up & Pop Up Systems

We also stock our SOS Roller banner stands in 850mm & 800mm.



RIPs & Software

Fiery XF7

Introducing the Fiery® XF 7 digital front end to your wide or super-wide print production is the easiest way to achieve superior colour results, gain maximum productivity, and profit from business insights.

Unrivalled print job management

Fiery XF 7 comes with a new user experience — EFI Fiery Command WorkStation, the world's most popular interface for the management, layout, and editing of digital print jobs. It conveniently connects to multiple Fiery servers at a time - whether driving inkjet or cut-sheet printers — and connects multiple printers to a single Fiery XF server for truly unified print job management through a single interface.

Maximum productivity and throughput

EFI's exclusive Fiery Accelerated System Technology (FAST RIP), now available for Fiery XF users, accelerates file processing speeds by an average of 5 times.

Ultimate colour, quality and control

Proof-grade colour controls and verification mean industry standard compliant colour results — no matter the application or product being produced. 100% EFI-developed colour management using ICC technology, combined with sophisticated iterative spot and process colour optimization routines deliver superior colour.



XF Production/ XF Proofing



Fiery XF Production is the perfect fit for inkjet print production; or for Proofing, Fiery XF Proofing is the ideal choice.



JobFlow

Fiery® JobFlow™ automates job preparation steps in prepress workflows to produce ready-to-print files. This easy-to-use print workflow automation software increases productivity and reduces costs.

PreplT

Optimise your large format production with PreplT; functions include job interlocking to reduce waste and maximise profitability

SOS is part of the EFI Premier Partner Program and a certified Fiery Display Graphics Sales Specialist



RIPs & Software



gmG colorServer

Automated colour conversion that eliminates correction cycles and reprints, and includes profiling tools for speed and efficiency

GMG ColorServer uses GMG's proprietary MX technology for the highest quality colour separations and enables print jobs to be switched easily between presses and sites, with predictable colour results time after time. Available as either a pay-monthly subscription or perpetual license, GMG ColorServer provides all the tools required for end-to-end colour management, incorporating colour separation, proofing, ink optimisation and exact profiling tools tailored to your printing processes.



Wherever a colour goes it stays that colour gmG color

End-to-end colour management from



gmG colorProof

Providing verified and repeatable contract proofs that streamline prepress and production

The globally recognised standard for quality contract proofing, GMG ColorProof is ideal in customer-facing applications with demanding colour communication. GMG proofing allows you to see upfront exactly how process and spot colours will be printed on a chosen substrate, or in specific print conditions. This results in a streamlined approval process, plus taking proofing off the press saves production time and materials.

Packaging mock-up proofing on the Roland LEC2-330: GMG Colour Management provides repeatable accuracy

Driving the Roland LEC2-330 with GMG ColorProof and GMG OpenColor enables accurate and reproducible proofs on packaging production substrates, with finishing possibilities including metallic effects. Thanks to reliable calibration and profiling, users can easily create specific media profiles for any media used with the printer.



Ink saving technology built in

RIPs & Software

ALWAN ColorHub



Alwan Color Expertise

Centralised colour management that gives you the best possible colour and saves you ink.

- Easy to learn ~ Easy to use ~ Easy to save
- Best colour ~ least ink
- Ink Saver Max

Digital print is amazing for its speed and flexibility. The downside, higher ink costs and matching colours across printers and substrates. There are many solutions but none as easy and powerful as Alwan ColorHub.

Using open ICC profiles you can make a profile and be using it in 10 minutes. Select High Ink Save and you could save up to 50% on heavy prints.

Make a profile using Hydra's spectral engine as it needs fewer patches for the most accurate results. ColorHub uses the Adobe Print Engine and its own fixes to handle the most complex of PDFs. Spot colours overprinting CMYK with transparency? ColorHub will handle it.

Using the web browser interface you can Preflight Spots colours and get DE numbers back to aid print decisions.

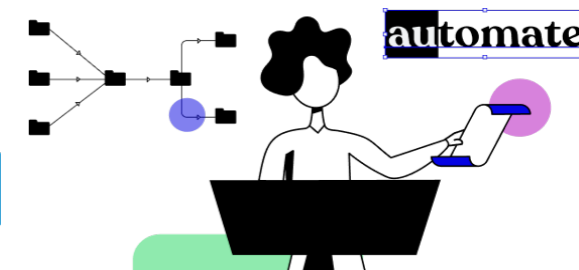
Made for images and PDF files colour separation and ink optimization, Alwan ColorHub allows you to print accurate and predictable colours, no matter what input, output colour spaces and printing processes you use.

Ink saving
technology
built in



Spectral profiling
quick and
easy with
Alwan's Hydra

Workflow



Bottlenecks, turn around, integration, ganging lots of buzzwords for printers trying to increase business. Throwing people at the problems isn't the way forward for cost or availability.

So you need to **automate**. You need to have a workflow that can integrate with your MIS, RIPs, PreFlight, Find and Fix common issues, push Proofs for approval, the list goes on.

With Enfocus Switch, you'll see immediate effect including better margins, happier employees, higher quality, and much greater productivity.

- Spend less time on tedious tasks and more on creating revenue
- Automate existing business processes and see profits soar
- Automate anything - get creative with new business objectives
- Scale to any level, from mom & pop to enterprise production



Workflow

SOS: Fogra Digital Print Partners for over 10 years!

Colour management should be the cornerstone of our industry - we sell colour. Walk in to any printer and the chances are you will see them proudly displaying their ISO certificate, or perhaps something to say how green they are - but how often do you see them displaying credentials which prove they are good at printing?

FOGRA certification can provide that 'mark of quality' to distinguish your business from your competitors.

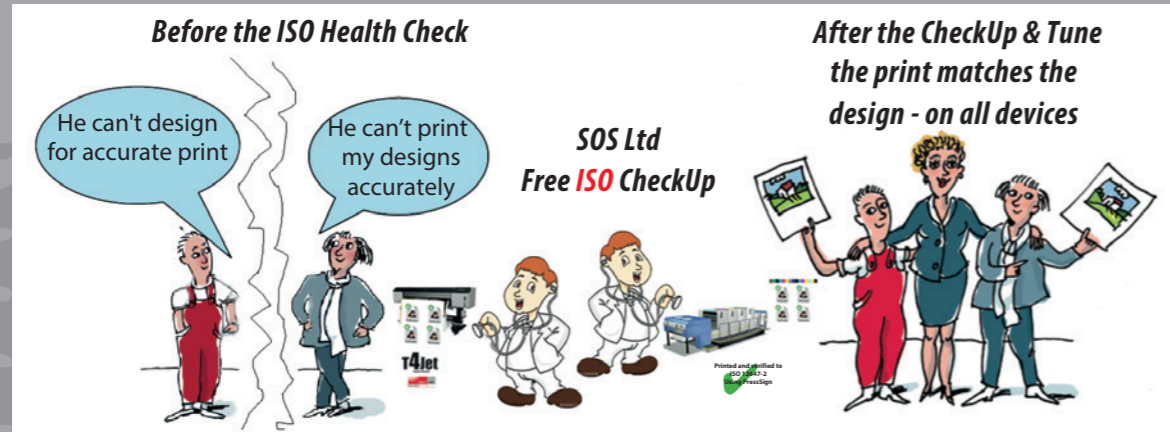
Large format machines and proofers often need some adjustment to hit the desired profile, despite high levels of automation and good RIP systems.

Colour calibration is essential if you're producing with multiple processes and require cross-platform consistency.



SOS is a Fogra certified company. We offer colour compliance for various printing processes including large format, offset and small format printing.

The advantages of partnering with SOS for your large format equipment are repeatable colour accuracy, predictable colour with 'no surprises' and consistent quality.



Wide format film

TECHSETTER2 IMAGESETTER



The Techsetter2 is the newest model in EXILE's Thermal Imagesetter line-up. Using an all new 1200dpi printhead design, the Techsetter2 offers the best and fastest image quality to date for a dry film thermal output solution.

With the Techsetter2 you can produce fast, high-quality, full-width film positives and negatives at up to 14" (362mm) wide.

This turnkey imaging system enables you to image graphic arts films which are ideal for screen printing, engraving, rubber stamp printing, narrow flexo web, envelope printing and many other web applications.



- Environment friendly - no ink, toner or chemicals
- Ultra-fast imaging speed
- Longer lamp life
- 70 square feet per hour
- 1200 dpi & excellent dot quality



LIBERATOR XE

The Liberator XE series is a premium industrial line of imagesetters for flexographic and corrugated printing, achieving large-format prints at a true 1200 x 1200 dpi resolution. Available in sizes ranging from 18.25" to 54", the XE series efficiently produces top-of-the-line film separations.



LaserPoint film is used in the production of flexographic photopolymer and Letterpress plates and allows for a piece of laser abated film to be made on a Flexo CTP device, eliminating the need for a conventional imagesetter.

LaserPoint II is a patented laser ablative film used with infra-red laser Flexo CTP devices with a vacuum system. LaserPoint II has a solvent resistant, black, IR-UV absorbing coating on an optically clear polyester base.

Benefits

- Eliminate conventional imagesetter
- No chemicals required
- No Safe Lighting required
- No Darkroom
- Resistant to Solvent
- Compatible with most Flexo CTP devices
- Quality of image equal to best traditional film
- Robust and scratch resistant
- Available in 7 mil and widths of up to 1800mm



Service Offset Supplies

HEAD OFFICE:

**Oakwood Hill Industrial Estate
Loughton, Essex IG10 3TZ**

T: 020 8502 4291

E: orders@serviceoffsetsupplies.co.uk

or

E: enquiries@serviceoffsetsupplies.co.uk



[serviceoffsetsupplies](https://www.facebook.com/serviceoffsetsupplies)



[@sosltduk](https://twitter.com/sosltduk)

www.serviceoffsetsupplies.co.uk